

# PowerPlay™ Panel

## FIXED RESILIENT SYSTEM

Prefabricated PowerPlay Panels provide lineal cushions contributing to uniform high shock absorption and ball rebound value and offer athletic response equivalent to full blanket floors with the added advantage of subfloor ventilation and resilient pad protection. Sectional steel channel anchorage contributes to added stability and uniformity while allowing for lateral movement.



INFINITY  
Wood Floors





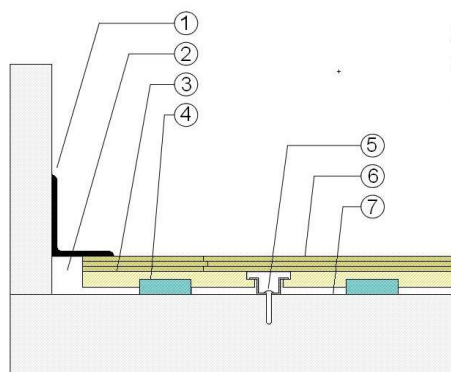
# PowerPlay™ Panel

PowerPlay Panel provides desired shock absorption, basketball rebound, protective pad housing, airflow, and stabilizing steel concrete anchorage.



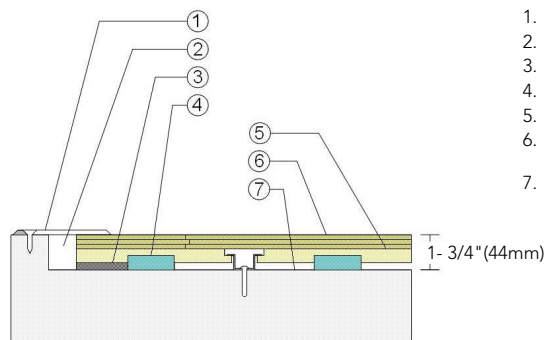
1. Infinity MFMA Maple
2. Sectional Steel Channel Anchor
3. Pre-manufactured Panel
4. Recessed Panel Cushion
5. Vapor Retarder
6. Concrete Substrate

## WALL BASE



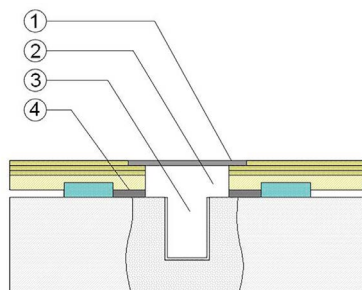
1. 3" x 4" (76mm x 101mm) Vent Cove Base
2. 1 1/2" (38mm) Min. Expansion Space
3. PowerPlay™ Panel Subfloor
4. Recessed Resilient Cushion
5. Anchored Steel Channel Section
6. 25/32" (20mm) MFMA Maple Flooring
7. Vapor Retarder

## THRESHOLD



1. 1/4" (6mm) Aluminum Threshold
2. 1 1/2" (38mm) Min. Expansion Space
3. Solid Blocking at Doorway
4. Recessed Resilient Cushion
5. PowerPlay™ Panel Subfloor
6. 25/32" (20mm) MFMA Maple Flooring
7. Vapor Retarder

## EQUIPMENT



1. Floor Plate
2. 1 1/2" (38mm) Min. Expansion Space Required at all Insert & Electrical Penetrations
3. Concrete Floor Penetration
4. Solid Blocking at Insert

## Anchorage

Certified

Green Status  
and LEED  
Contributors

Resilience

Slab  
Depression

Optional  
PowerPlay™  
Systems

Subfloor  
Construction

System Type

Testing  
Laboratory  
Partners

## Sectional Channel



- FSC® Certified Maple - MR
- FSC® Certified Subfloor Components - MR
- Environmental Quality - EQ
- Regional Materials - MR

3/4" (19mm) Open-Cell  
Polyurethane Foam

- 25/32" (20mm) flooring
- 1 3/4" (44mm)

PowerPlay™ Edge  
PowerPlay™ Cradle  
PowerPlay™ Trax  
PowerPlay™ TP

Pre-manufactured panels

Fixed Resilient



It is the policy of Infinity Wood Floors to continuously improve its line of products. Therefore, Infinity Wood Floors reserves the right to change, modify or discontinue systems, specifications and accessories of all products at any time without notice or obligation to purchaser.



see us at  
**Sweets.com**

